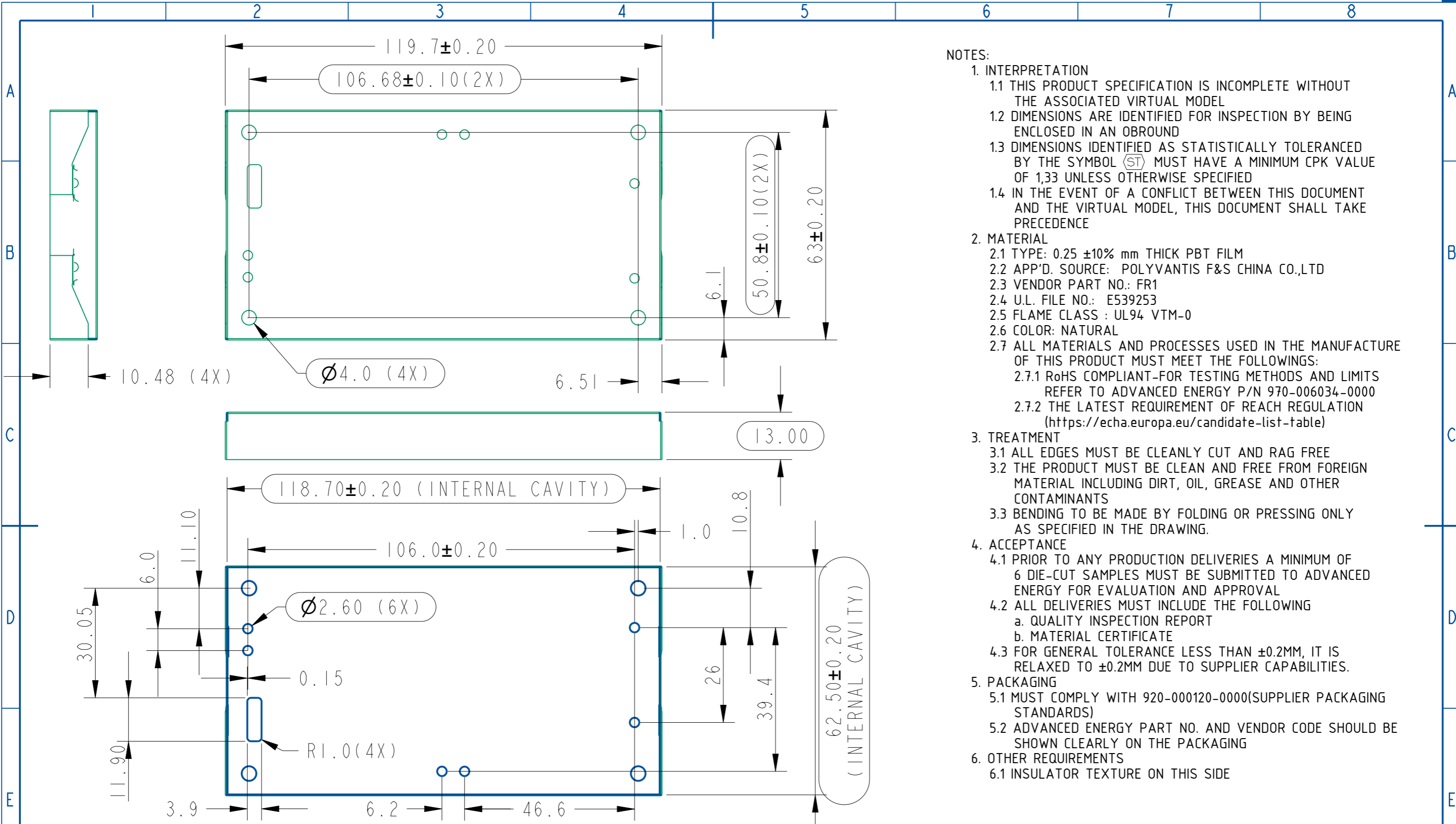


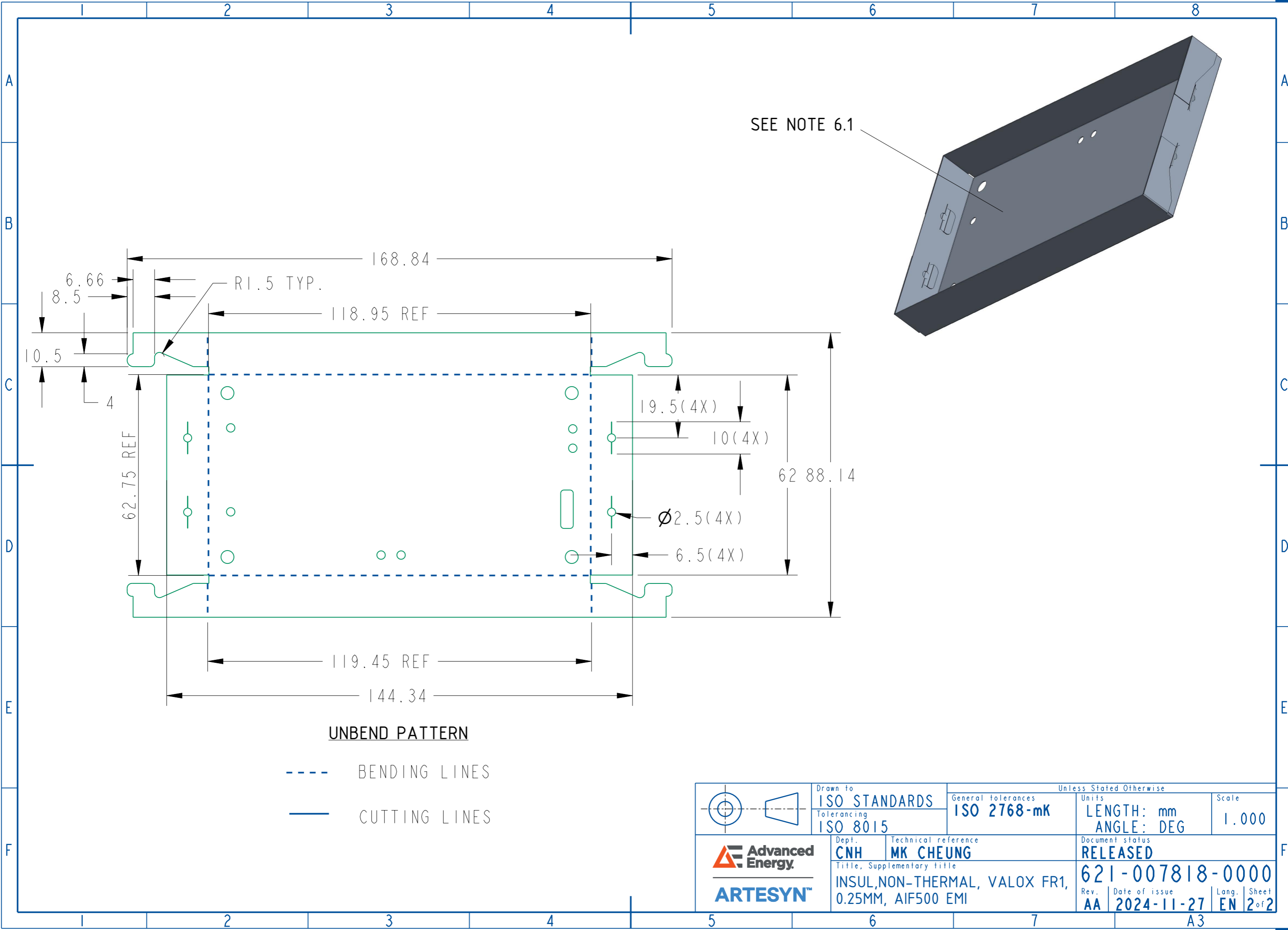
PROPRIETARY, CONFIDENTIAL and/or TRADE SECRET MATERIAL -- NOT OPEN TO PUBLIC. DO NOT SCAN, COPY OR DISTRIBUTE WITHOUT WRITTEN AUTHORIZATION FROM ADVANCED ENERGY INDUSTRIES, INC.  
 ©2024 ADVANCED ENERGY INDUSTRIES, INC. ALL RIGHTS RESERVED.  
 This document, and the information it contains, are the property of ADVANCED ENERGY INDUSTRIES, INC. and are protected by law. Both must be held in strictest confidence at all times.  
 No license or right to copy, use or disclose this document, or the information it contains, is granted expressly or by implication.



- NOTES:
- INTERPRETATION
    - THIS PRODUCT SPECIFICATION IS INCOMPLETE WITHOUT THE ASSOCIATED VIRTUAL MODEL
    - DIMENSIONS ARE IDENTIFIED FOR INSPECTION BY BEING ENCLOSED IN AN OBOUND
    - DIMENSIONS IDENTIFIED AS STATISTICALLY TOLERANCED BY THE SYMBOL (ST) MUST HAVE A MINIMUM CPK VALUE OF 1.33 UNLESS OTHERWISE SPECIFIED
    - IN THE EVENT OF A CONFLICT BETWEEN THIS DOCUMENT AND THE VIRTUAL MODEL, THIS DOCUMENT SHALL TAKE PRECEDENCE
  - MATERIAL
    - TYPE: 0.25 ±10% mm THICK PBT FILM
    - APP'D. SOURCE: POLYVANTIS F&S CHINA CO.,LTD
    - VENDOR PART NO.: FR1
    - U.L. FILE NO.: E539253
    - FLAME CLASS : UL94 VTM-0
    - COLOR: NATURAL
    - ALL MATERIALS AND PROCESSES USED IN THE MANUFACTURE OF THIS PRODUCT MUST MEET THE FOLLOWINGS:
      - RoHS COMPLIANT-FOR TESTING METHODS AND LIMITS REFER TO ADVANCED ENERGY P/N 970-006034-0000
      - THE LATEST REQUIREMENT OF REACH REGULATION (<https://echa.europa.eu/candidate-list-table>)
  - TREATMENT
    - ALL EDGES MUST BE CLEANLY CUT AND RAG FREE
    - THE PRODUCT MUST BE CLEAN AND FREE FROM FOREIGN MATERIAL INCLUDING DIRT, OIL, GREASE AND OTHER CONTAMINANTS
    - BENDING TO BE MADE BY FOLDING OR PRESSING ONLY AS SPECIFIED IN THE DRAWING.
  - ACCEPTANCE
    - PRIOR TO ANY PRODUCTION DELIVERIES A MINIMUM OF 6 DIE-CUT SAMPLES MUST BE SUBMITTED TO ADVANCED ENERGY FOR EVALUATION AND APPROVAL
    - ALL DELIVERIES MUST INCLUDE THE FOLLOWING
      - QUALITY INSPECTION REPORT
      - MATERIAL CERTIFICATE
    - FOR GENERAL TOLERANCE LESS THAN ±0.2MM, IT IS RELAXED TO ±0.2MM DUE TO SUPPLIER CAPABILITIES.
  - PACKAGING
    - MUST COMPLY WITH 920-000120-0000(SUPPLIER PACKAGING STANDARDS)
    - ADVANCED ENERGY PART NO. AND VENDOR CODE SHOULD BE SHOWN CLEARLY ON THE PACKAGING
  - OTHER REQUIREMENTS
    - INSULATOR TEXTURE ON THIS SIDE

|  |          |         |                      |            |  |                  |  |  |   |  |                                    |       |    |  |              |            |           |                  |  |  |  |  |  |            |          |         |                      |      |            |             |  |  |  |  |  |  |  |  |  |  |  |  |                        |  |  |  |  |
|--|----------|---------|----------------------|------------|--|------------------|--|--|---|--|------------------------------------|-------|----|--|--------------|------------|-----------|------------------|--|--|--|--|--|------------|----------|---------|----------------------|------|------------|-------------|--|--|--|--|--|--|--|--|--|--|--|--|------------------------|--|--|--|--|
|  |          |         |                      |            | Drawn to<br><b>ISO STANDARDS</b><br>Tolerancing<br><b>ISO 8015</b> |                  | Unless Stated Otherwise<br>General tolerances<br><b>ISO 2768-mK</b>                    |  | Units<br><b>LENGTH: mm</b><br><b>ANGLE: DEG</b> |  | Scale<br><b>1.000</b>              |       |    |  |              |            |           |                  |  |  |  |  |  |            |          |         |                      |      |            |             |  |  |  |  |  |  |  |  |  |  |  |  |                        |  |  |  |  |
|  |          |         |                      |            | Material<br><b>SEE NOTES</b>                                       |                  | Treatment<br><b>SEE NOTES</b>  |  |   |  |                                    |       |    |  |              |            |           |                  |  |  |  |  |  |            |          |         |                      |      |            |             |  |  |  |  |  |  |  |  |  |  |  |  |                        |  |  |  |  |
|  |          |         |                      |            | Created by<br><b>MK CHEUNG</b>                                     |                  | Approved by<br><b>ANDY KONG</b>  |  | Document type<br><b>DRAWING</b>                 |  |                                    |       |    |  |              |            |           |                  |  |  |  |  |  |            |          |         |                      |      |            |             |  |  |  |  |  |  |  |  |  |  |  |  |                        |  |  |  |  |
|  |          |         |                      |            | <b>Advanced Energy</b>   |                  | Dept.<br><b>CNH</b>  |  | Technical reference<br><b>MK CHEUNG</b>         |  | Document status<br><b>RELEASED</b> |       |    |  |              |            |           |                  |  |  |  |  |  |            |          |         |                      |      |            |             |  |  |  |  |  |  |  |  |  |  |  |  |                        |  |  |  |  |
|  |          |         |                      |            | <b>ARTESYN™</b>  |                  | Title, Supplementary title<br><b>INSUL, NON-THERMAL, VALOX FRI, 0.25MM, AIF500 EMI</b> |  | <b>621-007818-0000</b>                          |  |                                    |       |    |  |              |            |           |                  |  |  |  |  |  |            |          |         |                      |      |            |             |  |  |  |  |  |  |  |  |  |  |  |  |                        |  |  |  |  |
|  |          |         |                      |            |  |                  | Rev.<br><b>AA</b>  |  | Date of issue<br><b>2024-11-27</b>              |  | Lang. Sheet<br><b>EN 1 of 2</b>    |       |    |  |              |            |           |                  |  |  |  |  |  |            |          |         |                      |      |            |             |  |  |  |  |  |  |  |  |  |  |  |  |                        |  |  |  |  |
| <table border="1"> <tr> <td>-0000</td> <td>AA</td> <td></td> <td>REL. DRAWING</td> <td>2024-11-27</td> <td>MK CHEUNG</td> <td><i>Andy Kong</i></td> <td colspan="5"></td> </tr> <tr> <td>P/N SUFFIX</td> <td>REVISION</td> <td>ECO NO.</td> <td>REVISION DESCRIPTION</td> <td>DATE</td> <td>REVISED BY</td> <td>APPROVED BY</td> <td colspan="5"></td> </tr> <tr> <td colspan="7"></td> <td colspan="5" style="text-align: center;">SHEET REVISION HISTORY</td> </tr> </table> |          |         |                      |            |  |                  |  |  |   |  |                                    | -0000 | AA |  | REL. DRAWING | 2024-11-27 | MK CHEUNG | <i>Andy Kong</i> |  |  |  |  |  | P/N SUFFIX | REVISION | ECO NO. | REVISION DESCRIPTION | DATE | REVISED BY | APPROVED BY |  |  |  |  |  |  |  |  |  |  |  |  | SHEET REVISION HISTORY |  |  |  |  |
| -0000  | AA       |         | REL. DRAWING         | 2024-11-27 | MK CHEUNG  | <i>Andy Kong</i> |  |  |   |  |                                    |       |    |  |              |            |           |                  |  |  |  |  |  |            |          |         |                      |      |            |             |  |  |  |  |  |  |  |  |  |  |  |  |                        |  |  |  |  |
| P/N SUFFIX   | REVISION | ECO NO. | REVISION DESCRIPTION | DATE       | REVISED BY   | APPROVED BY      |  |  |   |  |                                    |       |    |  |              |            |           |                  |  |  |  |  |  |            |          |         |                      |      |            |             |  |  |  |  |  |  |  |  |  |  |  |  |                        |  |  |  |  |
|  |          |         |                      |            |  |                  | SHEET REVISION HISTORY   |  |   |  |                                    |       |    |  |              |            |           |                  |  |  |  |  |  |            |          |         |                      |      |            |             |  |  |  |  |  |  |  |  |  |  |  |  |                        |  |  |  |  |

PROPRIETARY, CONFIDENTIAL and/or TRADE SECRET MATERIAL -- NOT OPEN TO PUBLIC. DO NOT SCAN, COPY OR DISTRIBUTE WITHOUT WRITTEN AUTHORIZATION FROM ADVANCED ENERGY INDUSTRIES, INC.  
 ©2024 ADVANCED ENERGY INDUSTRIES, INC. ALL RIGHTS RESERVED.  
 This document, and the information it contains, are the property of ADVANCED ENERGY INDUSTRIES, INC. and are protected by law. Both must be held in strictest confidence at all times.  
 No license or right to copy, use or disclose this document, or the information it contains, is granted either expressly or by implication.



**UNBEND PATTERN**

- BENDING LINES
- CUTTING LINES

|  |                                  |  |   |  |                        |                       |
|--|----------------------------------|--|---|--|------------------------|-----------------------|
|  | Drawn to<br><b>ISO STANDARDS</b> | General tolerances<br><b>ISO 2768-mK</b>   |   | Unless Stated Otherwise<br>Units<br><b>LENGTH: mm</b><br><b>ANGLE: DEG</b> |                        | Scale<br><b>1.000</b> |
|  | Tolerancing<br><b>ISO 8015</b>   | Dept.<br><b>CNH</b>  | Technical reference<br><b>MK CHEUNG</b> | Document status<br><b>RELEASED</b>   |                        |                       |
|  |                                  | Title, Supplementary title<br><b>INSUL, NON-THERMAL, VALOX FR1, 0.25MM, AIF500 EMI</b> |   | <b>621-007818-0000</b>   |                        |                       |
|  |                                  | Rev.<br><b>AA</b>  | Date of issue<br><b>2024-11-27</b>      | Lang.<br><b>EN</b>   | Sheet<br><b>2 of 2</b> |                       |