

ARTESYN ADQ700-48S12-4L SERIES

696 W Quarter brick Converter



PRODUCT DESCRIPTION

Advanced Energy's Artesyn ADQ700-48S12-4L is a single output DC-DC converter with standard quarter-brick outline and pin configuration. It delivers up to 58A output current with 12V output voltage. Ultra-high 96.0% efficiency and excellent thermal performance makes it an ideal choice for use in datacom and telecommunication applications and can work under -40°C to $+85^{\circ}\text{C}$ with air cooling.

SPECIAL FEATURES

- Delivering up to 58A output
- Ultra-high efficiency 96.0% typ. at 50% load
- Startup Pre-bias: $0\%V_{out} \sim 95\%V_{out}$
- Input range: 40V to 60Vdc
- Excellent thermal performance
- No minimum load requirement
- RoHS 3.0
- Remote control function
- Input under-voltage lockout
- Input over voltage lockout
- Output over current protection
- Output short circuit protection
- Output over voltage protection
- Industry standard quarter-brick pin-out outline
- Open-frame and baseplated
- Pin length option: 4.6mm

- Over temperature protection

SAFETY

- IEC/EN/UL/CSA 62368
- CE Mark
- UL/TUV
- Materials meet UL94, V-0

TYPICAL APPLICATIONS

- Telecom/ Datacom

AT A GLANCE

Total Power

696 W

Input Voltage

40 to 60 Vdc

of Outputs

Single



MODEL NUMBERS

Standard	Output Voltage	Structure	Remote ON/OFF logic	RoHS Status
ADQ700-48S12-4L	12Vdc	Open-frame	Negative	RoHS 3.0
ADQ700-48S12B-4L	12Vdc	Baseplate	Negative	RoHS 3.0
ADQ700-48S12-4LI	12Vdc	Open-frame	Negative	RoHS 3.0
ADQ700-48S12B-4LI	12Vdc	Baseplate	Negative	RoHS 3.0

Ordering Information

ADQ700	-	48	S	12	P	B	-	6	L	I
①		②	③	④	⑤	⑥		⑦	⑧	⑨

①	Model series	ADQ: high efficiency quarter brick series, 700: output power 696W
②	Input voltage	48: 40V ~ 60V input range, rated input voltage 48V
③	Output number	S: single output
④	Rated output voltage	12: 12V output
⑤	Remote on/off logic	Default: negative logic; P: positive logic
⑥	Baseplate	B: with baseplate; default: open frame
⑦	Pin length	4: 4.6mm ± 0.25mm pin length
⑧	RoHS status	RoHS 3.0
⑨	PMBus	I: With PMBus communication; Default: Without PMBus communication

Options

None

ELECTRICAL SPECIFICATIONS

Absolute Maximum Ratings

Stress in excess of those listed in the “Absolute Maximum Ratings” may cause permanent damage to the power supply. These are stress ratings only and functional operation of the unit is not implied at these or any other conditions above those given in the operational sections of this TRN. Exposure to any absolute maximum rated condition for extended periods may adversely affect the power supply’s reliability.

Table 1. Absolute Maximum Ratings						
Parameter	Model	Symbol	Min	Typ	Max	Unit
Input Voltage Operating – Continuous Non-operating 100ms	All	$V_{IN,DC}$	- -	- -	64 80	Vdc Vdc
Maximum Output Power	All	$P_{O,max}$	-	-	696	W
Isolation Voltage ¹ Input to output	All		-	-	1500	Vdc
Ambient Operating Temperature	All	T_A	-40	-	+85	°C
Storage Temperature	All	T_{STG}	-55		+125	°C
Voltage at Remote ON/OFF Pin	All		-0.3	-	+12	Vdc
Humidity (non-condensing) Operating	All		-	-	95	%

Note 1 - 1mA for 60s, slew rate of 500V/1s

ELECTRICAL SPECIFICATIONS

Input Specifications

Table 2. Input Specifications							
Parameter	Condition ¹	Symbol	Min	Typ	Max	Unit	
Operating Input Voltage, DC	All	$V_{IN,AC}$	40	48	60	Vdc	
Input under-voltage lockout	Turn-on Voltage Threshold	$I_O = I_{O,max}$	$V_{IN,ON}$	36	38.7	40	Vdc
	Turn-off Voltage Threshold	$I_O = I_{O,max}$	$V_{IN,OFF}$	35	37	39	Vdc
	Lockout Voltage Hysteresis	$I_O = I_{O,max}$		1	-	3	Vdc
Input over voltage lockout	Turn-on Voltage Threshold	$I_O = I_{O,max}$	$V_{IN,ON}$	60.5	62.3	64.5	Vdc
	Turn-off Voltage Threshold	$I_O = I_{O,max}$	$V_{IN,OFF}$	62.5	64.5	66.5	Vdc
	Lockout Voltage Hysteresis	$I_O = I_{O,max}$		1	-	3	Vdc
Maximum Input Current $I_O = I_{O,max}$	$V_{IN,DC} = 40Vdc$	$I_{IN,max}$	-	-	20.5	A	
No Load Input Current	$V_{IN,DC} = 48Vdc$	I_{IN}	-	150	-	mA	
Standby Input Current	Remote Off	I_{IN}	-	10	100	mA	
Recommended Input Fuse	Fast blow external fuse recommended		-	-	30	A	
Recommended External Input Capacitance	Low ESR capacitor recommended	C_{IN}	220	-	-	uF	
Input Ripple Current	Through 12uH inductor		-	200	-	mA	
Input Filter Component Value(C\L)	Internal values		-	14.1\0.22		uF\uH	
Operating Efficiency	$T_A = 25\text{ }^\circ\text{C}$ $I_O = I_{O,max}$	η	-	96.0	-	%	

Note 1 - $T_A = 25^\circ\text{C}$, airflow rate = 400 LFM, $V_{in} = 48Vdc$, nominal V_{out} unless otherwise noted.

ELECTRICAL SPECIFICATIONS

Output Specifications

Table 3. Output Specifications							
Parameter	Condition ¹	Symbol	Min	Typ	Max	Unit	
Factory Set Voltage	$V_{IN,DC} = 48Vdc$ $I_O = I_{O,max}$	V_O	11.88	12.00	12.12	Vdc	
Output Voltage Line Regulation	All	$\pm V_O$	-	20	60	mV	
Output Voltage Load Regulation	All	$\pm V_O$	-	20	60	mV	
Output Voltage Temperature Regulation	All	$\%V_O$	-	0.002	0.02	$\%^{\circ}C$	
Output Ripple, pk-pk	Measure with a 0.68 μ F output capacitor to 20MHz bandwidth	V_O	-	200	-	mV _{PK-PK}	
Output Current	All	I_O	0	-	58	A	
Output DC Current-limit Inception ²		I_O	64	-	82	A	
Vo Load Capacitance	All	C_O	220	-	5000 ³	μ F	
Vo Dynamic Response	50%~75%~50% $I_{O,max}$ slew rate = 0.1A/ μ s	$\pm V_O$ T_s	- -	200 500	- -	mV us	
	Peak Deviation Settling Time	50%~75%~50% $I_{O,max}$ slew rate = 1A/ μ s	$\pm V_O$ T_s	- -	370 200	- -	mV us
Switch frequency	All	f_{SW}	-	200	-	kHz	
Turn-on Transient	Rise Time	$I_O = I_{O,max}$	T_{rise}	-	15	100	ms
	Turn-on Delay Time	$I_O = I_{O,max}$	$T_{turn-on}$	-	50	100	ms
	Turn-On Overshoot	$I_O = 0$			0		$\%V_O$
Remote ON/OFF Control (positive logic)	Off-state Voltage			-0.3		1.2	Vdc
	On-state Voltage			3.5		12	Vdc
Remote ON/OFF Control (negative logic)	Off-state voltage			3.5		12	Vdc
	On-state Voltage			-0.3		1.2	Vdc
Output Over-voltage Protection ⁴	All		13.8	-	16	Vdc	
Pre-bias		$\%V_O$	0	-	95	%	
Output Over-temperature Protection ⁵	All	T	-	120	-	$^{\circ}C$	
Over-temperature Hysteresis	All	T	5	-	-	$^{\circ}C$	

ELECTRICAL SPECIFICATIONS

Output Specifications

Table 3. Output Specifications Con't						
Parameter	Condition ¹	Symbol	Min	Typ	Max	Unit
MTBF	Telcordia SR-332 Method 1 Case 1 Rated Output@80% load 300LFM, 40°C T _A		-	1.5	-	10 h

Note 1 - T_A = 25°C, airflow rate = 400 LFM, V_{in} = 48Vdc, nominal V_{out} unless otherwise noted.

Note 2 - Hiccup: auto-restart when over-current condition is removed.

Note 3 - The output capacitance is OSCON or similar type.

Note 4 - Hiccup: auto-restart when over-voltage condition is removed.

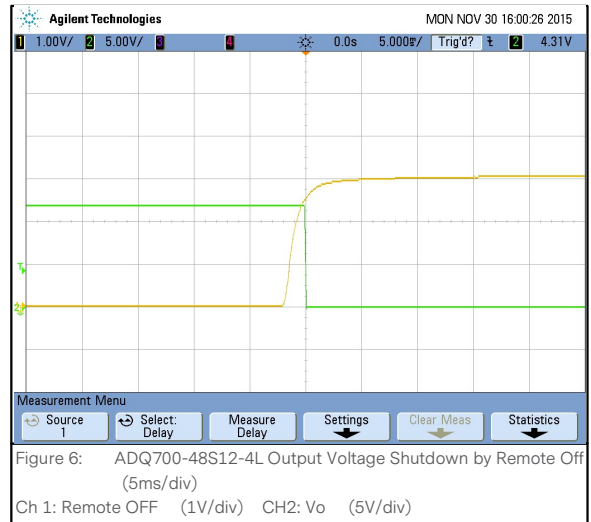
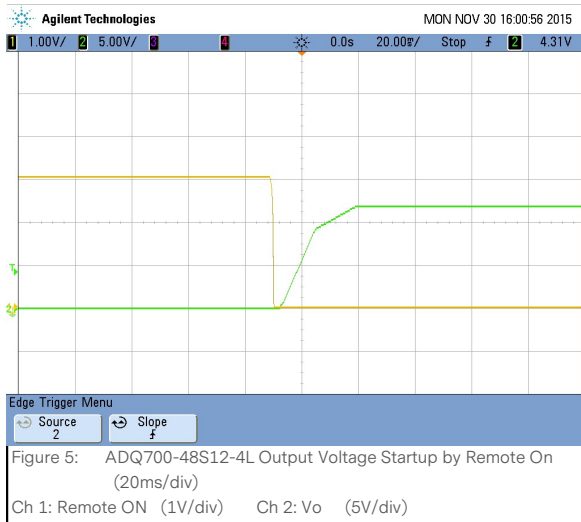
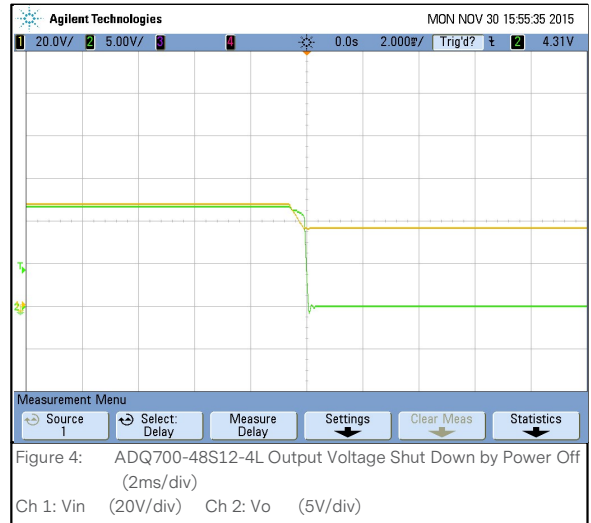
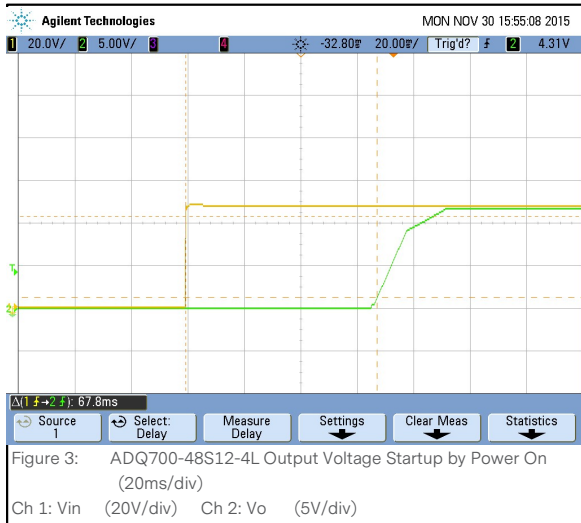
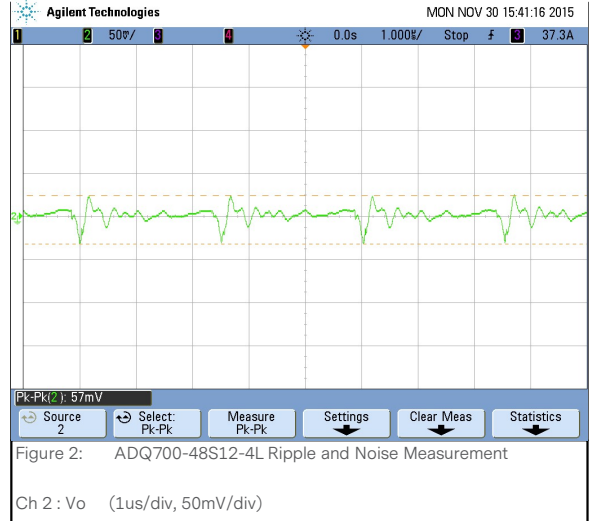
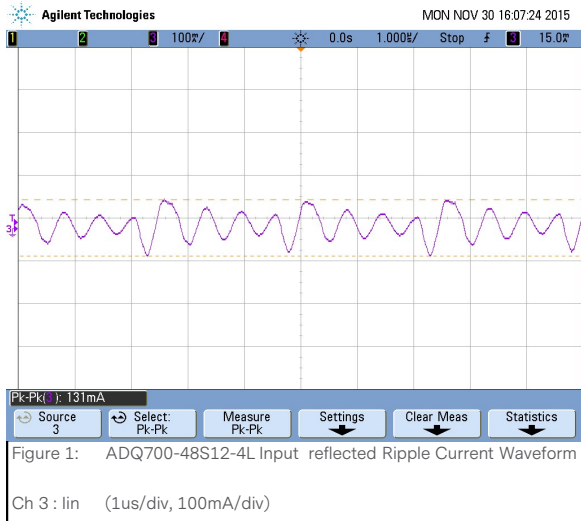
Note 5 - Auto recovery when over-temperature condition is removed.

PMBus™ Signal interface Characteristics

Table 4. PMbus Signal Interface Characteristics						
Parameter	Condition	Symbol	Min	Typ	Max	Unit
Input High Voltage (CLK,DATA)			2.1	-	3.6	V
Input Low Voltage (CLK,DATA)			0	-	0.4	V
Input High Level Current (CLK,DATA)			-10	-	10	µA
Output Low Voltage (CLK,DATA)	I _o = 2mA		-	-	0.4	V
Output high level open drain Leakage (CLK,DATA)	V _o = 3.3V		-	5	-	µA
PMBUS operation frequency				100		kHz

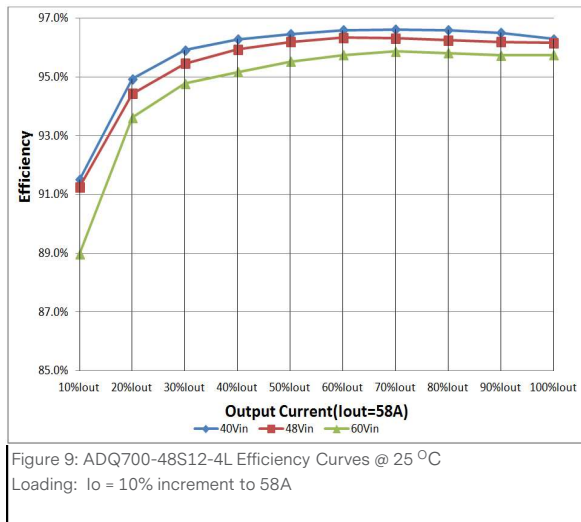
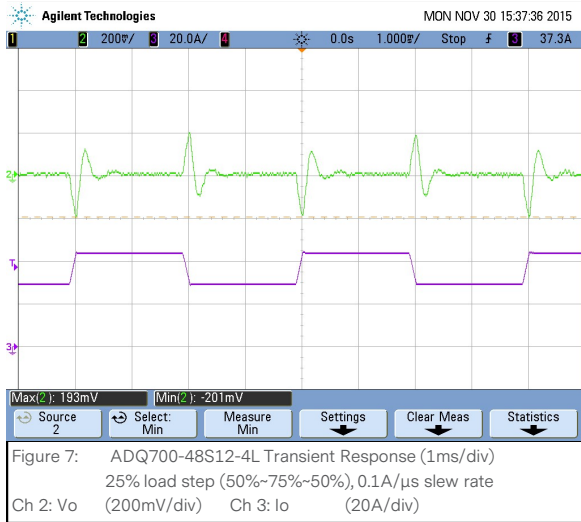
ELECTRICAL SPECIFICATIONS

ADQ700-48S12-4L Performance Curves



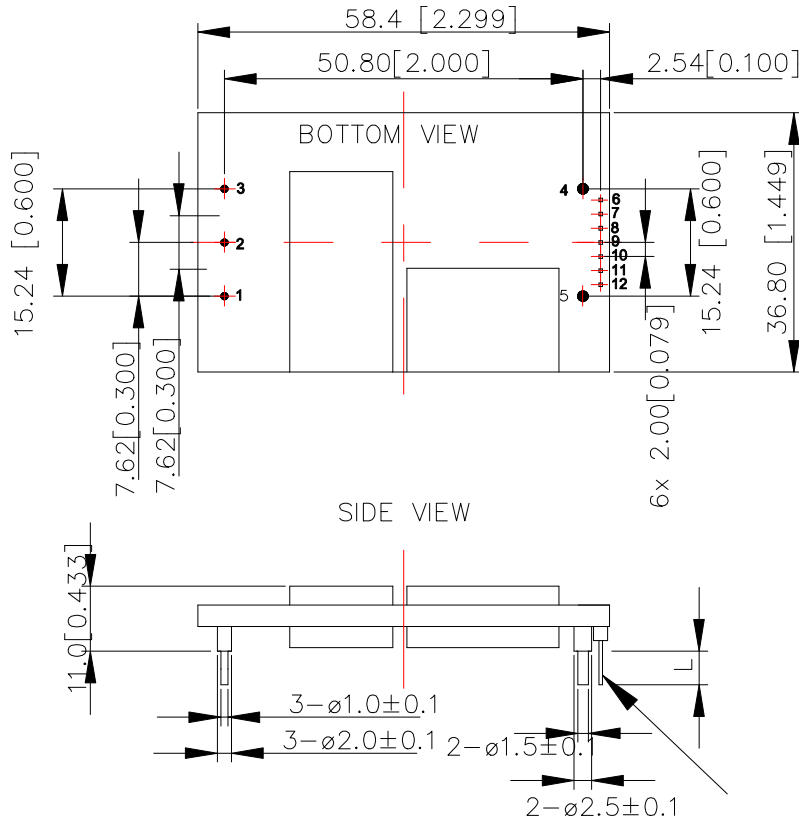
ELECTRICAL SPECIFICATIONS

ADQ700-48S12-4L Performance Curves



MECHANICAL SPECIFICATIONS

Mechanical Outlines - Open Frame Module



UNIT: mm[inch]

TOLERANCE: X.Xmm±0.5mm[X.XX in.±0.02in.]

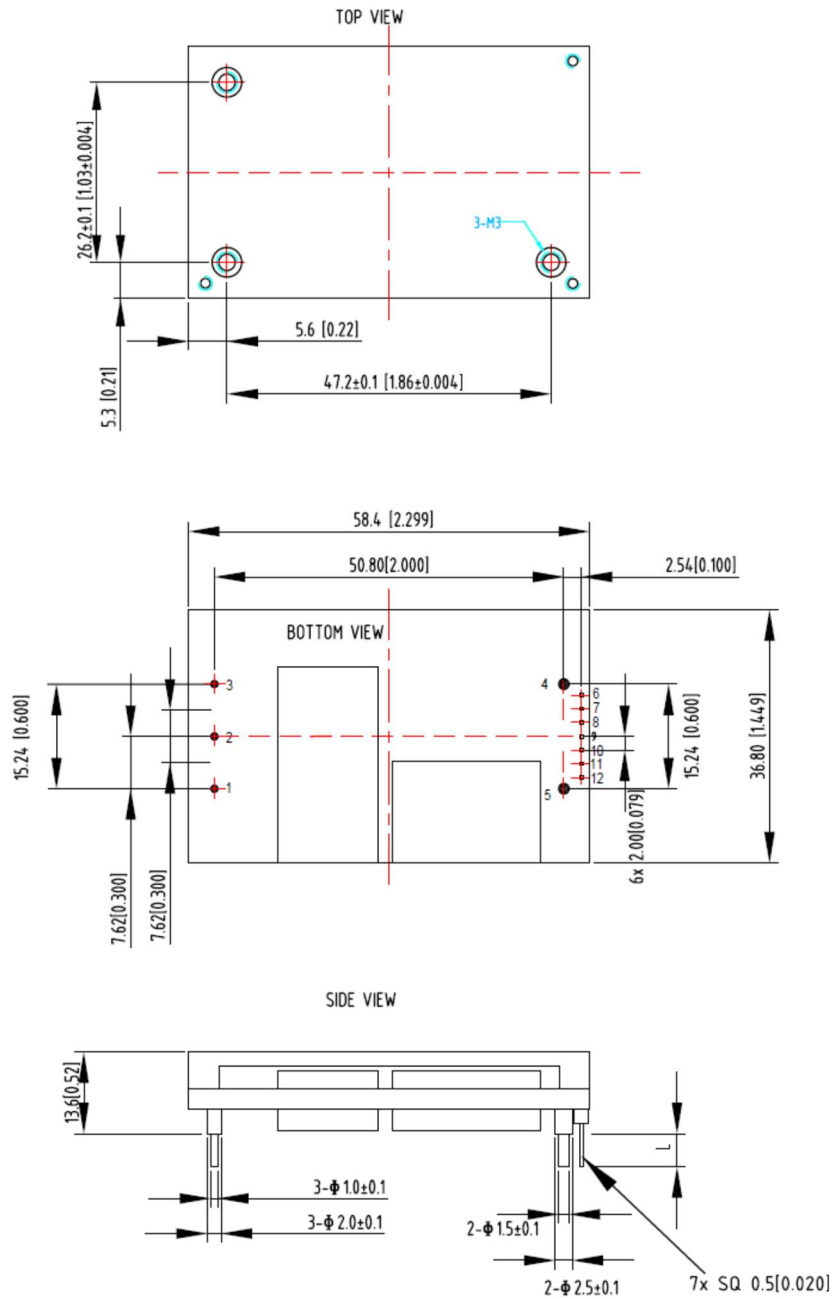
X.XXmm±0.25mm[X.XXX in.±0.01in.]

Notes: 1. Dimensions whitin the box are critical dimensions.

MECHANICAL SPECIFICATIONS

Mechanical Outlines - Baseplate Module

ADQ700-48S12B-4LI



UNIT: mm[inch]

TOLERANCE: X.X mm ± 0.5 mm [X.XX in. ± 0.02 in.]

X.XX mm ± 0.25 mm [X.XXX in. ± 0.01 in.]

MECHANICAL SPECIFICATIONS

Pin Length Option

Device code suffix	L
-4	4.6±0.25 mm
-6	3.8±0.25 mm
-8	2.8±0.25 mm
None	5.8±0.25 mm

Pin Designations

Pin No	Name	Function
1	Vin+	Positive input voltage
2	Remote On/Off	Remote control
3	Vin-	Negative input voltage
4	Vo-	Negative output voltage
5	Vo+	Positive output voltage
6	C2	Digital
7	Sig-Gnd	Digital
8	Data	Digital
9	SMBAlert	Digital
10	Clock	Digital
11	NA	NA
12	NA	NA

ENVIRONMENTAL SPECIFICATIONS

EMC Immunity

ADQ700-48S12-4L power supply is designed to meet the following EMC immunity specifications:

Table 5. Environmental Specifications:		
Document	Description	Criteria
EN55032, Class B Limits	Conducted Emission and DC input port	B
IEC/EN 61000-4-2, Level 3	Electromagnetic Compatibility (EMC) - Testing and measurement techniques: Electrostatic discharge immunity test	B
IEC/EN 61000-4-4, Level3	Electromagnetic Compatibility (EMC) - Testing and measurement techniques: Electrical Fast Transient. DC input port.	B
IEC/EN 61000-4-5	Electromagnetic Compatibility (EMC) - Testing and measurement techniques: Immunity to surges - 600V common mode and 600V differential mode for DC port	B
IEC/EN 61000-4-6, Level 2	Electromagnetic Compatibility (EMC) - Testing and measurement techniques: Continuous Conducted Interference. DC input port	A
EN61000-4-29	Electromagnetic Compatibility (EMC) - Testing and measurement techniques: Voltage Dips and short interruptions and voltage variations. DC input port	B

Criterion A: Normal performance during and after test.

Criterion B: For EFT and surges, low-voltage protection or reset is not allowed. Temporary output voltage fluctuation ceases after disturbances ceases, and from which the EUT recovers its normal performance automatically.

For Dips and ESD, output voltage fluctuation or reset is allowed during the test, but recovers to its normal performance automatically after the disturbance ceases.

Criterion C: Temporary loss of output, the correction of which requires operator intervention.

Criterion D: Loss of output which is not recoverable, owing to damage to hardware.

ENVIRONMENTAL SPECIFICATIONS

Safety Certifications

The ADQ700-48S12-4L power supply is intended for inclusion in other equipment and the installer must ensure that it is in compliance with all the requirements of the end application. This product is only for inclusion by professional installers within other equipment and must not be operated as a stand alone product.

Table 6. Safety Certifications for ADQ700-48S12-4L series power supply system	
Standard	Description
UL/CSA 62368	US and Canada Requirements
EN 62368	European Requirements
IEC 62368	International Requirements
CE	CE Marking

ENVIRONMENTAL SPECIFICATIONS

Operating Temperature

The ADQ700-48S12-4L series power supplies will start and operate within stated specifications at an ambient temperature from -40 °C to 85 °C under all load conditions. The storage temperature is -55 °C to 125 °C.

Thermal Considerations – Open-frame module(ADQ700-48S12-4L)

The converter is designed to operate in different thermal environments and sufficient cooling must be provided. Proper cooling can be verified by measuring the temperature at the test point as shown in the Figure 10. The temperature at this point should not exceed the max values in the table 7.

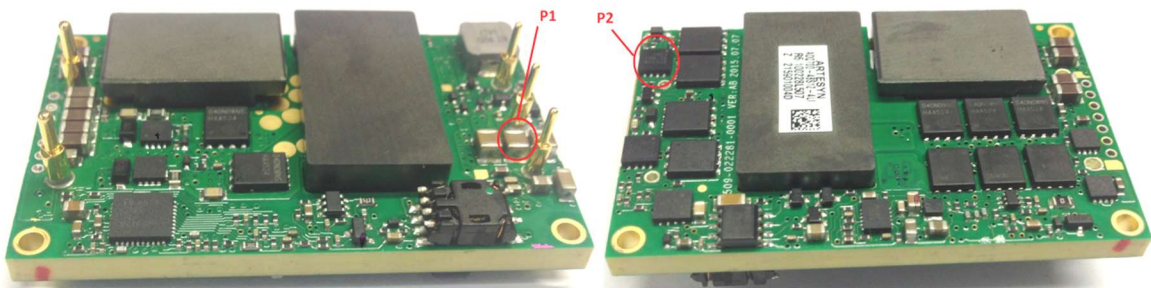


Figure 10 Temperature test point

Table 7. Temperature limit of the test points	
Test Point	Description
P1	115 °C
P2	120 °C

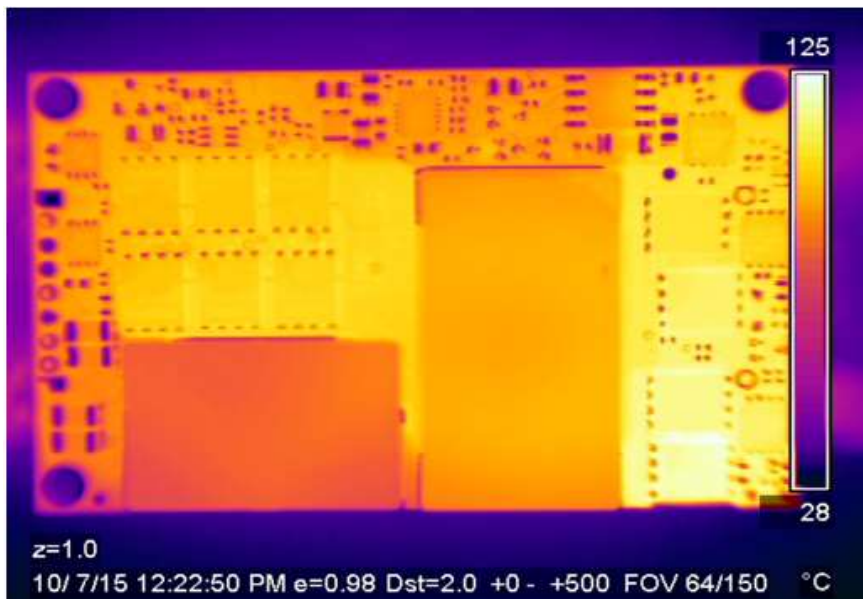


Figure 11 Thermal image, test at 56Vin, 12Vo, full load, room temperature

ENVIRONMENTAL SPECIFICATIONS

Open-frame unit Thermal De-rating data

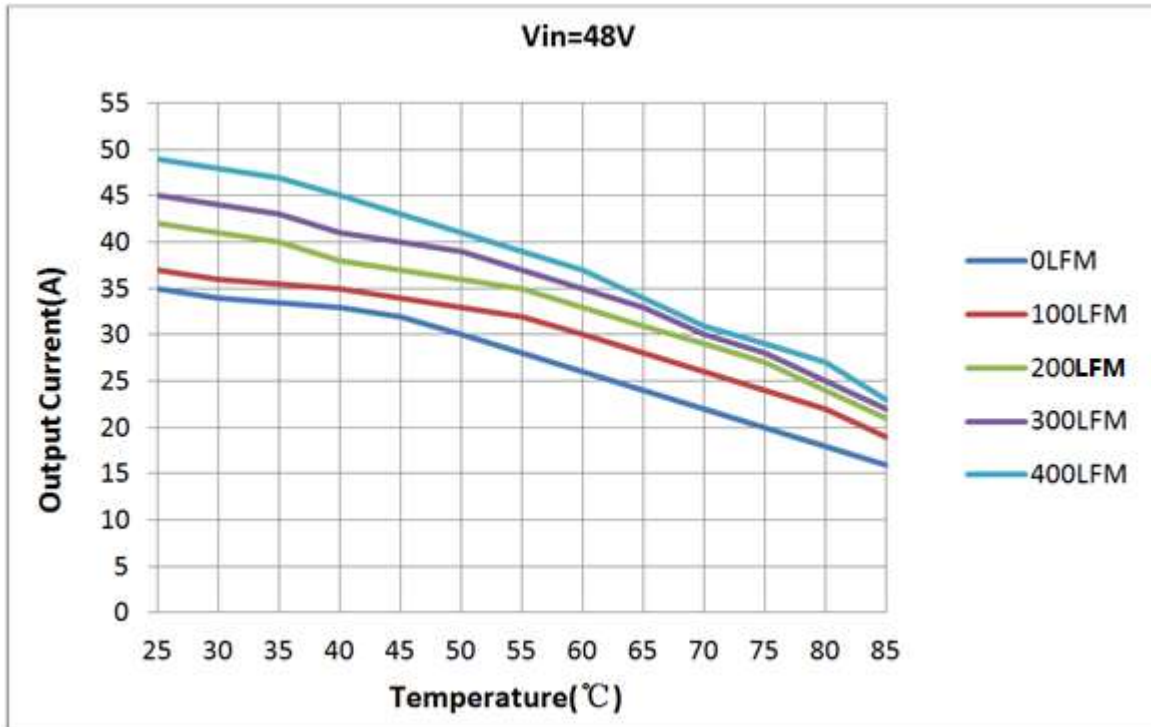


Figure 12 Output power derating, 48Vin, air flowing across the converter from Vin- to Vin+

ENVIRONMENTAL SPECIFICATIONS

Thermal Considerations – Baseplate module(ADQ700-48S12B-4L)

The converter is designed to operate in different thermal environments and sufficient cooling must be provided. Proper cooling can be verified by measuring the temperature at the test point as shown in the Figure 13. The temperature at this point should not exceed the max values in the table 8.

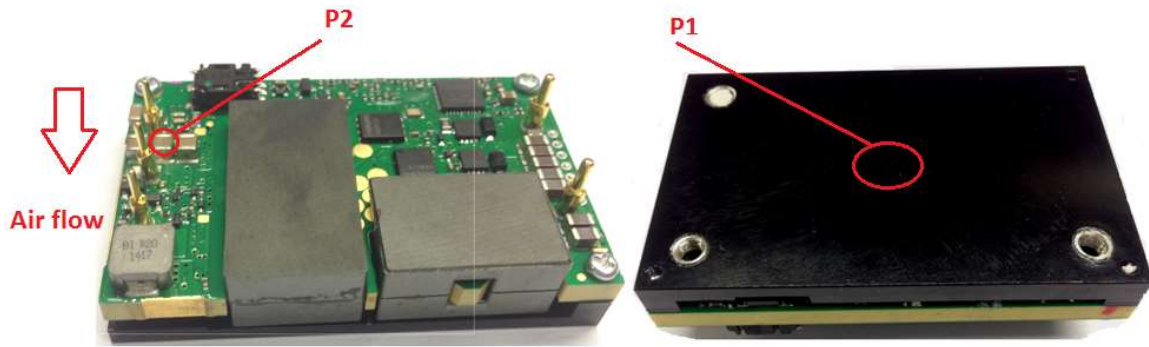


Figure 13 Temperature test point

Table 8. Temperature limit of the test points	
Test Point	Description
P1	110°C
P2	115 °C



Figure 14 Typical test condition, heatsink

ENVIRONMENTAL SPECIFICATIONS

Thermal Considerations – Baseplate module(ADQ700-48S12B-4L)

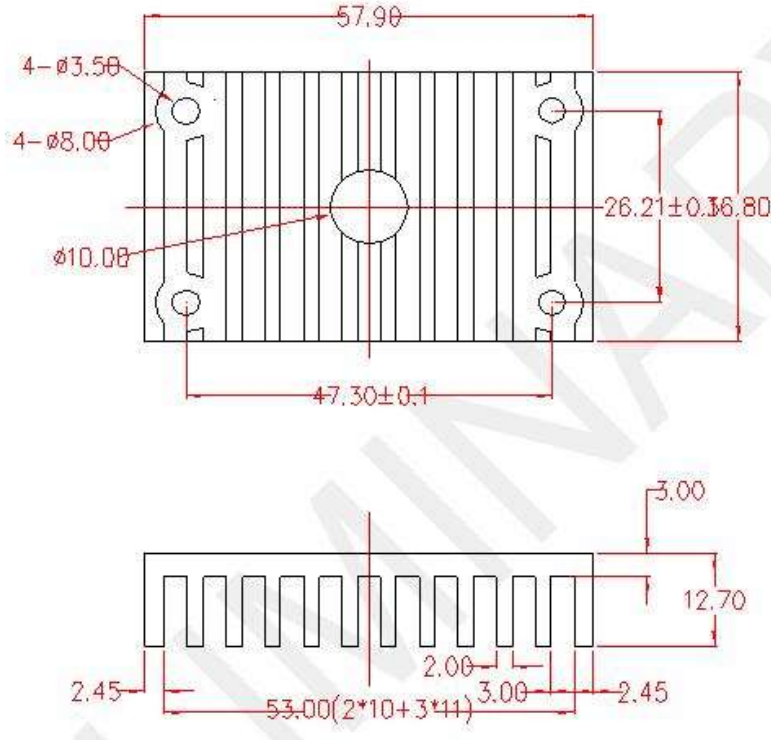


Figure 15 Typical test condition, Heatsink

Baseplate with heatsink unit Thermal De-rating data

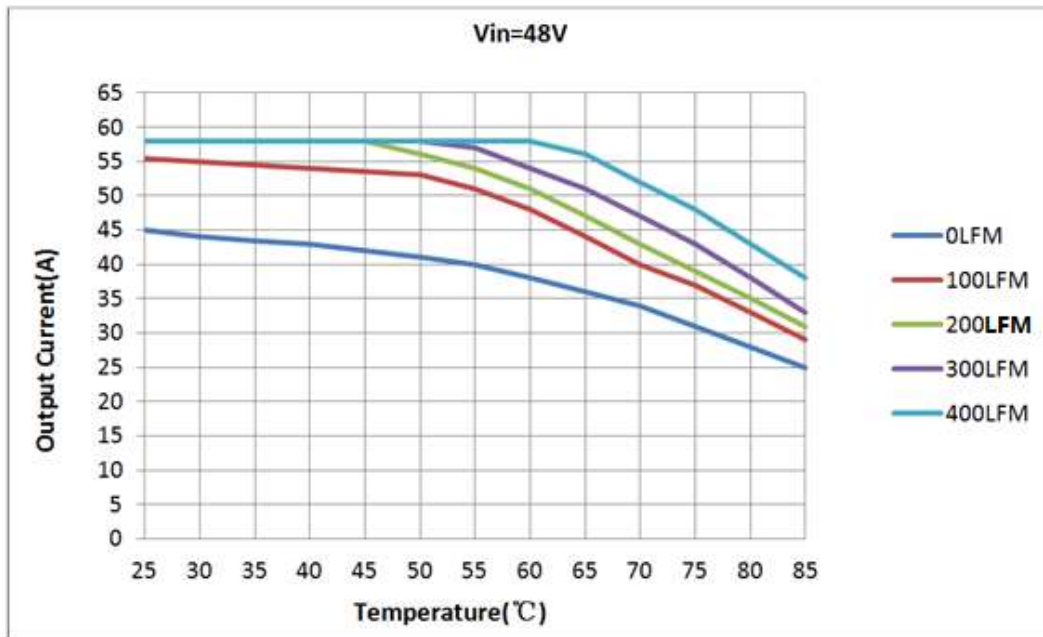


Figure 16 Output power derating, 48Vin, air flowing across the converter from Vin- to Vin+

ENVIRONMENTAL SPECIFICATIONS

Parameter	Unit (pcs)	Test condition
Halt test	4-5	T _{a,min} -20°C to T _{a,max} +30°C, 5°C step, V _{in} = min to max, 0 ~ 100% load
Vibration	3	Frequency range: 5Hz ~ 20Hz, 20Hz ~ 200Hz, A.S.D: 1.0m2/s3, -3db/oct, axes of vibration: X/Y/Z. Time: 30min/axes.
Mechanical Shock	3	30g, 6ms, 3axes, 6directions, 3time/direction.
Thermal Shock	3	-55°C to 125°C, Temp Dwell Time: 30min, Temp change rate: 20°C/min, unit temperature 20 cycles.
Thermal Cycling	3	-40°C to 85°C, Temp change rate: 1°C/min, Cycles: 2cycles
Humidity	3	40 °C, 95%RH, 48h
Solder Ability	15	IPC J-STD-002C-2007

APPLICATION NOTES

Typical Application

Either positive or negative remote ON/OFF logic is available in ADQ700-48S12-4L. The logic is CMOS and TTL compatible.

Below is the detailed internal circuit and reference in ADQ700-48S12-4L.

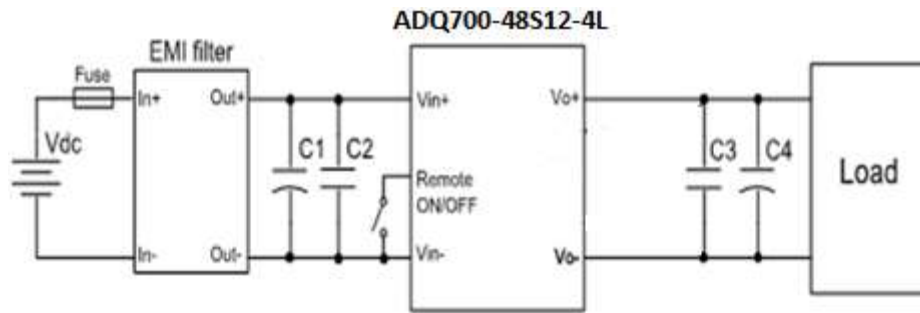


Figure 17 Typical application

C1: 220 μ F/100V electrolytic capacitor, P/N: UPM2A221MPD (Nichicon) or equivalent caps

C2,C3: 1 μ F/100V X7R ceramic capacitor, P/N: C3225X7R2A105KT0L0U (TDK) or equivalent caps

C4: 220 μ F/25V Oscon capacitor, P/N: 16SEPC220M (OS-CON) or equivalent caps

Fuse: External fast blow fuse with a rating of 30A/250Vac. The recommended fuse model is 0314030 MRP from Karwin Tech limited.

EMI filter: refer to Figure 20

APPLICATION NOTES

Remote ON/OFF

Either positive or negative remote ON/OFF logic is available in ADQ700-48S12-4L. The logic is CMOS and TTL compatible.

Below is the detailed internal circuit and reference in ADQ700-48S12-4L.

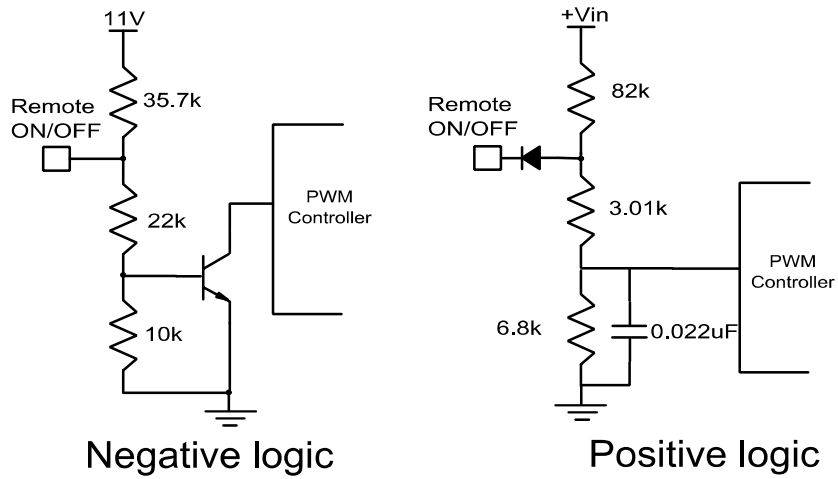


Figure 18 Remote ON/OFF internal diagram

APPLICATION NOTES

Input Ripple & Output Ripple & Noise Test Configuration

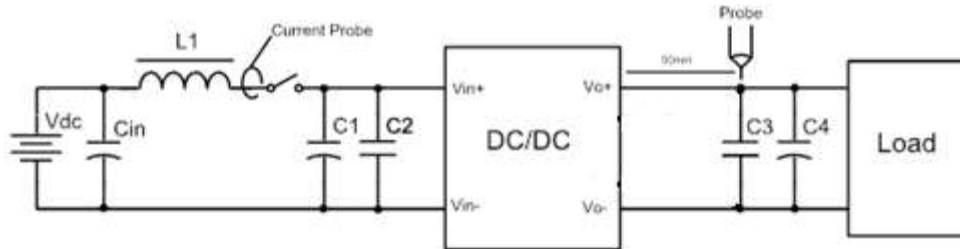


Figure 19 Input ripple & inrush current & ripple and noise test configuration

Vdc: DC power supply

L1:12uH

Cin: 220uF/100V typical

C1~C4: See Figure 17

Note - Using a coaxial cable with series 50ohm resistor and 0.68uF ceramic capacitor or a ground ring of probe to test output ripple & noise is recommended.

APPLICATION NOTES

EMC Test Conditions

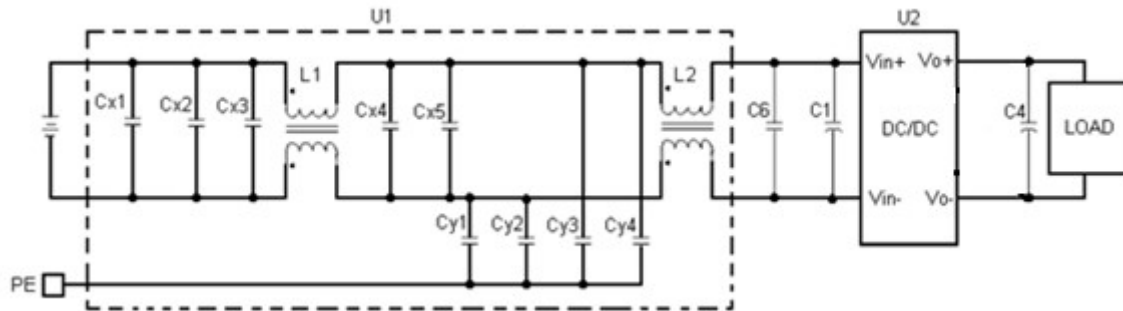


Figure 20 EMC test conditions

U1: Input EMC filter

U2: Module to test, ADQ700-48S12-4L

CX1, CX2, CX4, CX5: 1 μ F/100V/X7R capacitor

CX3: 2200nF/100V/X7S capacitor

Cy1, Cy2, Cy3, Cy4: 0.47 μ F/250V/X7R, Y capacitor

L1, L2: 473 μ H, common mode inductor.

C6: 100nF/100V/X7R capacitor

C1, C4: See Figure 17

APPLICATION NOTES

PMBus Communication

The module has a digital PMBus interface to allow the module to be monitored, controlled and configured by the system. The module supports 3 PMBus signal lines, Data, Clock, Control (C2 pin, optional). More detail PMBus information can be found in the PMBus Power Management Protocol Specification, Part I and part II, revision 1.2; which is shown in <http://pmbus.org>. 100kHz bus speed is supported by the module.

The module supports the Packet Error Checking (PEC) protocol. It can check the PEC byte provided by the PMBus master, and include a PEC byte in all message responses to the master.

The module contains a data flash used to store configuration settings, which will not be programmed into the device data flash automatically. The STORE_DEFAULT_ALL command must be used to commit the current settings are transfer from RAM to data flash as device defaults.

PMBus™ SPECIFICATIONS

PMBus Addressing

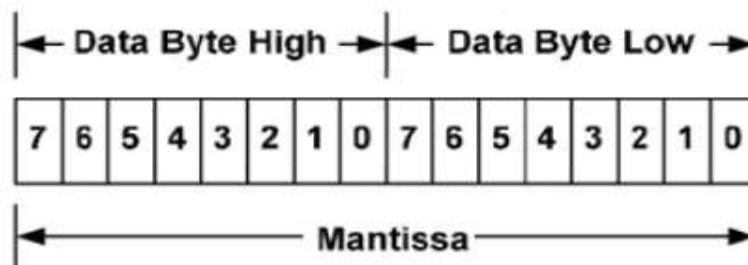
The module has fixed PMBUS address (0x59). Through this address, the host computer can address the module.

PMBus Data Format

The module receives and report date in LINEAR format. The Exponent of the data words is fixed at a reasonable value for the command; altering the exponent is not supported.

DIRECT format is not supported by the module.

For commands that set or report any voltage thresholds related to the output voltage, the module supports the linear data format consisting of a two byte value with a 16-bit, unsigned mantissa, and a fixed exponent of -12. The format of the two data bytes is shown below:



The equation can be written as:

$$V_{out} = \text{Mantissa} \times 2^{-9}$$

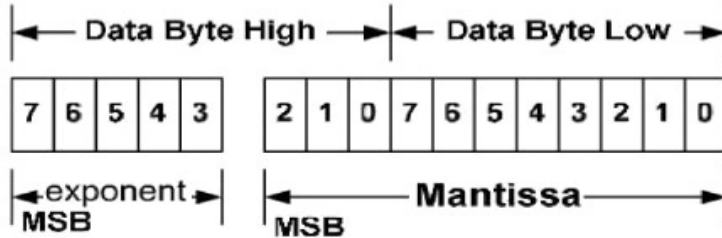
For example, considering set V_{out} to 12V by `VOUT_COMMAND`, the read/write data can be calculated refer to below process:

1. $\text{Mantissa} = V_{out} / 2^{-9} = 12 / 2^{-9} = 6144$;
2. Converter the calculated Mantissa to hexadecimal 0x1800.

For commands that set or report all other thresholds, including input voltages, output current, temperature, time and frequency, the supported linear data format is a two byte value with: an 11 bit, two's complement mantissa , and a 5 bit, two's complement exponent (scaling factor).The format of the two data bytes is shown as in below.

PMBus™ SPECIFICATIONS

PMBus Data Format



The equation can be written as:

$$\text{Value} = \text{Mantissa} \times 2^{\text{exponent}}$$

For example, considering set the turn on threshold of input under voltage lockout to 33V by VIN_ON command; the read/write data can be calculated refer to below process:

1. Get the exponent of Vin, 0; whose binary is 00000
2. Mantissa = $V_{in}/2^0 = 33/2^0 = 33$;
3. Converter the calculated Mantissa to hexadecimal 21, then converter to binary 00000100001;
4. Combine the exponent and the mantissa, 00000 and 0000000000100001;
5. Converter binary 0000000000100001 to hexadecimal 0021.

The detail exponent and resolution of main parameter is to be decided later.

PMBus™ SPECIFICATIONS

ADQ700-48S12-4L Support PMBus™ Command List

The main PMBus commands described in the PMBus 1.2 specification are supported by the module. Partial PMBus commands are fully supported; Partial PMBus commands have difference with the definition in PMBus 1.2 specification. The details about all the supported PMBus commands are to be decided later.

ADQ700-48S12-4L Series Supported PMBus™ Command List:

Command Code	Command Name	Default Value	Access Type	Data Bytes	Data Format	Description
01h	OPERATION	80	R/W	1	Bit field	Turn the module on or off by PMBUS command
03h	CLEAR_FAULTS	-	S	-	-	Clear any fault bits that have been set
11h	STORE_DEFAULT_ALL	-	S	0	-	Stores operating parameters from RAM to data flash (This command is effective to the parameter of all command in the table.)
12h	RESTORE_DEFAULT_ALL	-	S	0	-	Restores operating parameters from data flash to RAM (This command can't be issued when the power unit is running.)
20h	VOUT_MODE	17	R	1	mode+exp	To read Vo data format
21h	VOUT_COMMAND	12	R/W	2	Vout Linear	Set the output voltage Range: 9.6V to 13.2V
35h	VIN_ON	39	R/W	2	Linear	Set the turn on voltage threshold of Vin under voltage lockout. Range:36V to 46V (VIN_ON should be higher than VIN_OFF, and keep 2V hysteresis.)
36h	VIN_OFF	37	R/W	2	Linear	Set the turn off voltage threshold of Vin under voltage lockout. Range:34 to 46V (VIN_ON should be higher than VIN_OFF, and keep 2V hysteresis.)
40h	VOUT_OV_FAULT_LIMIT	14.4	R/W	2	Vout Linear	Set the output overvoltage fault threshold. (Must be higher than the value of VOUT_COMMAND and VOUT_OV_WARN_LIMIT) Range:11V to 16V

PMBus™ SPECIFICATIONS

ADQ700-48S12-4L Series Supported PMBus™ Command List:

Command Code	Command Name	Default Value	Access Type	Data Bytes	Data Format	Description
41h	VOUT_OV_FAULT_RESPONSE	B8	R	1	Bit field	Instructs what action to take in response to an output overvoltage fault.
4Fh	OT_FAULT_LIMIT	118	R/W	2	Linear	Set the over temperature fault threshold. (Must be greater than OT_WARN_LIMIT value) Range:25 to 140 degC
50h	OT_FAULT_RESPONSE	80	R	1	Bit field	Instructs what action to take in response to an over temperature fault.
51h	OT_WARN_LIMIT	115	R/W	2	Linear	Set a threshold causing a temperature high warning. Range:25 to 125 degC
55h	VIN_OV_FAULT_LIMIT	65	R/W	2	Linear	Set the input overvoltage fault threshold. 48V to 70V
56h	VIN_OV_FAULT_RESPONSE	C0	R	1	Bit field	Instructs what action to take in response to an over Vin fault.
5Eh	POWER_GOOD_ON	11	R/W		Vout Linear	Sets the output voltage at which the bit 3 of STATUS_WORD high byte should be asserted. Range 8.1~13.2V
5Fh	POWER_GOOD_OFF	9	R/W	2	Vout Linear	Sets the output voltage at which the bit 3 of STATUS_WORD high byte should be negated. (Must be less than POWER_GOOD_ON value by 1.6V) 8.1~13.2V
79h	STATUS_WORD	-	R	-	Vout Linear	Returns the information with a summary of the module's fault/warning
88h	READ_VIN	-	R	-	Vin Linear	Returns the input voltage of the module
8Bh	READ_VOUT	-	R	-	Vout Linear	Returns the output voltage of the module
8Dh	READ_TEMPERATURE_1	-	R	2	Temp Linear	Returns the module's hot spot temperature of the module
98h	PMBUS_REVISION	1.2	R	1	Bit field	Reads the revision of the PMBus
E0h	MFR_C2_Configure	00	R/W	1	Bit field	Configures the C2 pin (secondary on/off pin) function and logic
E1h	MFR_PGOOD_POLARITY	01	R/W	1	Bit field	Configure Power Good logic
F7h	MFR_C1_C2_ARA_CONFIG	00	R/W	-	Bit field	Configure C2 pin function

PMBus™ SPECIFICATIONS

ADQ700-48S12-4L Series Supported PMBus™ Command List:

OPERATION [0x01]

Bit number	Purpose	Bit Value	Meaning	Default Settings, 0x80
7:	Enable/Disable the module	1	Output is enabled	1
		0	Output is disabled	
6:	Reserved			0
5:4	Margins	00	No margin	00
		01	Margin low(Act on Fault)	
		10	Margin high(Act on Fault)	
3:0	Reserved			0000

VOUT_OV_FAULT_RESPONSE [0x41]

Bit number	Purpose	Bit Value	Meaning	Default Settings, 0xB8
7: 6	Response settings	10	Unit shuts down and responds according to the retry settings	10
5:3	Retry setting	111	Unit continuously restarts while fault is present until commanded off	111
		000	Unit does not attempt to restart on fault	
2:0	Delay time setting	000	No delay supported	000

OT_FAULT_RESPONSE [0x50]

Bit number	Purpose	Bit Value	Meaning	Default Settings, 0x80
7: 6	Response settings	10	Unit shuts down and responds according to the retry settings	10
5:3	Retry setting	111	Unit continuously restarts while fault is present until commanded off	000
		000	Unit does not attempt to restart on fault	
2:0	Delay time setting	000	No delay supported	000

VIN_OV_FAULT_RESPONSE [0x56]

Bit number	Purpose	Bit Value	Meaning	Default Settings, 0xC0
7: 6	Response settings	11	Unit shuts down and responds according to the retry settings	11
5:3	Retry setting	111	Unit continuously restarts while fault is present until commanded off	000
		000	Unit does not attempt to restart on fault	
2:0	Delay time setting	000	No delay supported	000

PMBus™ SPECIFICATIONS

ADQ700-48S12-4L Series Supported PMBus™ Command List:

High byte

Bit number	Purpose	Bit Value	Meaning
7	An output over voltage fault	1	Reserved
		0	Reserved
6	An output over current fault or warning	1	Reserved
		0	Reserved
5	An input voltage fault, including over voltage and under-voltage	1	Reserved
		0	Reserved
4	Reserved		
3	Power_Good	1	Reserved
		0	Reserved
2:0	Reserved		

Low bite

Bit number	Purpose	Bit Value	Meaning
7	Reserved		
6	OFF (The unit is not providing power to the output, regardless of the reason)	1	Occurred
		0	No Occurred
5	An output over voltage fault	1	Occurred
		0	No Occurred
4	An output over current fault	1	Occurred
		0	No Occurred
3	An input under voltage fault	1	Occurred
		0	No Occurred
2	A temperature fault or warning	1	Occurred
		0	No Occurred
1	CML (A communications, memory or logic fault)	1	Occurred
		0	No Occurred
0	Reserved		

ALL of the warning or fault bits set in the status registers remain set, even if the fault or warning condition is removed or corrected, until one of the following occur:

- 1) The bit is individually cleared;
- 2) The device receives a CLEAR_FAULTS command;
- 3) Bias power is removed from the module.

MFR_C1_C2_ARA_CONFIG [0xF7]

Bit number	Purpose	Bit Value	Meaning
7:4	Reserved	0000	Reserved
3:0	PIN Configuration	0000	C2 pin: POWER_GOOD
		0010	C2 pin: ON/OFF (Secondary)

PMBus™ SPECIFICATIONS

ADQ700-48S12-4L Series Supported PMBus™ Command List:

MFR_C2_Configure [0xE0]

Bit number	Purpose	Bit Value	Meaning
7:2	Reserved	000000	Reserved
1	ON/OFF Configuration	0	Secondary side on/off pin state when mapped to C2 is ignored
		1	AND – Primary and Secondary side on/off
0	PIN Configuration	0	Negative Logic (Low Enable: Input < 0.8V wrt Vout(-))
		1	Positive Logic (High Enable: Input > 2.0V wrt Vout(-))

Bit number	Purpose	Bit Value	Meaning
7:1	Reserved	0000000	Reserved
0	Power Good Logic	0	Negative PGOOD logic
		1	Positive PGOOD logic

SOLDERING INFORMATION

Soldering

The product is intended for standard manual or wave soldering.

When wave soldering is used, the temperature on pins is specified to maximum 260 °C for maximum 10s.

When manual soldering is used, the iron temperature should be maintained at 300 °C ~ 380 °C and applied to the converter pins for less than 10s. Longer exposure can cause internal damage to the converter.

Cleaning of solder joint can be performed with cleaning solvent IPA or simulative.

RECORD OF REVISION AND CHANGES

Issue	Date	Description	Originators
1.0	04.06.2016	First Issue	S. Dong
1.1	10.03.2016	Update Picture	K. Wang
1.2	11.03.2016	Update "baseplate unit" to "baseplate with heatsink unit" and typo "FLM"	K. Wang
1.3	12.21.2018	1.Update safety 60950 to 62368 2.Pmbus communication	K. Wang
1.4	11.26.2019	Update soldering information	K. Wang
1.5	12.04.2019	Spec update	K. Wang
1.6	07.15.2020	HS product EOL	K. Wang
1.7	08.02.2024	Remove Radiated EMI Limits	K. Wang
1.8	08.12.2024	Remove Addr0 and Addr1 description	A. Zhang



For international contact information,
visit advancedenergy.com.

powersales@aei.com (Sales Support)
productsupport.ep@aei.com (Technical Support)
+1 888 412 7832

ABOUT ADVANCED ENERGY

Advanced Energy (AE) has devoted more than four decades to perfecting power for its global customers. AE designs and manufactures highly engineered, precision power conversion, measurement and control solutions for mission-critical applications and processes.

Our products enable customer innovation in complex applications for a wide range of industries including semiconductor equipment, industrial, manufacturing, telecommunications, data center computing, and medical. With deep applications know-how and responsive service and support across the globe, we build collaborative partnerships to meet rapid technological developments, propel growth for our customers, and innovate the future of power.

PRECISION | POWER | PERFORMANCE

Specifications are subject to change without notice. Not responsible for errors or omissions. ©2020 Advanced Energy Industries, Inc. All rights reserved. Advanced Energy®, and AE® are U.S. trademarks of Advanced Energy Industries, Inc.